

Decoding Dairy

Health Risks & Ethical Wrongs

From the insights of **Dr. Michael A. Klaper & Linda Middlesworth**.

The goal is to share facts, spark curiosity, and encourage healthier, kinder choices.

This resource, developed from the insights of Dr. Michael A. Klaper and Linda Middlesworth's event, is a conversation kit designed to help you compassionately and effectively discuss the health risks associated with dairy consumption. It provides science-based talking points on topics such as **cholesterol, inflammation, digestive issues, and bacterial contamination**, so you can have informed, everyday conversations with friends, family, and colleagues.

Questions to Spark Curiosity

Dr. Michael Klaper suggests three powerful, open-ended questions that can gently invite reflection when speaking with people who still consume animal products:

- **“Are you still consuming dairy products? Do you know the reality of where they come from?”**
A question that nudges people to pause and consider the hidden processes behind dairy.
- **“Do you have any concerns for animals in the meat industry’s production line?”**
Invites reflection on the human–animal relationship without judgment.
- **“Is cruelty to animals a concern for you?”**
A direct but compassionate way to connect values with choices.



These questions aren't about winning debates. They're about opening space for curiosity, planting seeds of awareness, and letting people connect the dots themselves.

1. Mastitis, Antibiotics, & What Ends Up in Milk.

Dr. Michael Klaper explained how dairy cows frequently suffer from **mastitis, a painful udder infection caused by machines and swollen udders pressing against the ground.** To treat this, workers in factory farms use a large blunt needle to **inject antibiotics like penicillin, lincomycin, or tetracycline directly into the udder.** At the end of a cow's milking cycle, she may also be given another large dose of antibiotics to clear lingering infections.



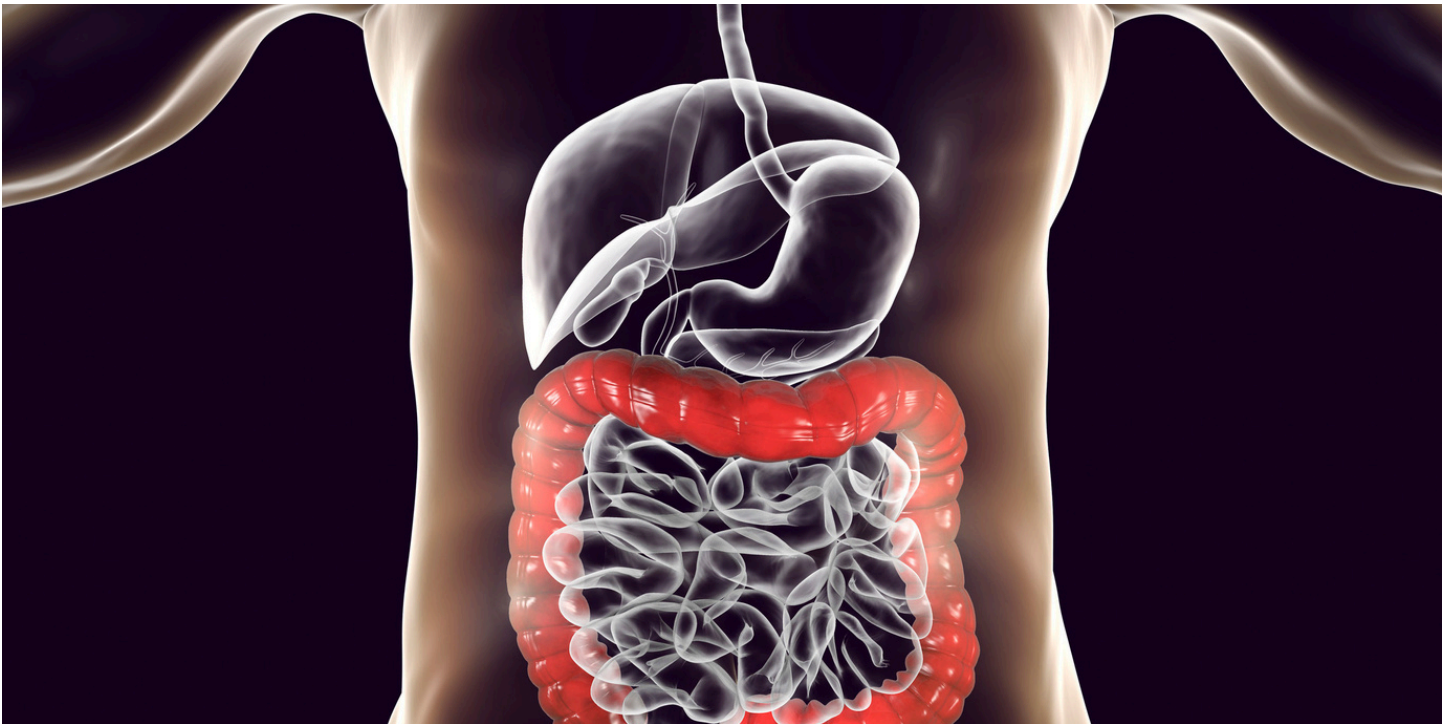
The problem? **Residues of these powerful drugs end up in the milk supply.**



How to bring it up: "Most people don't realize cows with infected udders are treated with strong antibiotics that can leave residues in the milk we drink."

2. What Happens in the Human **Body**?

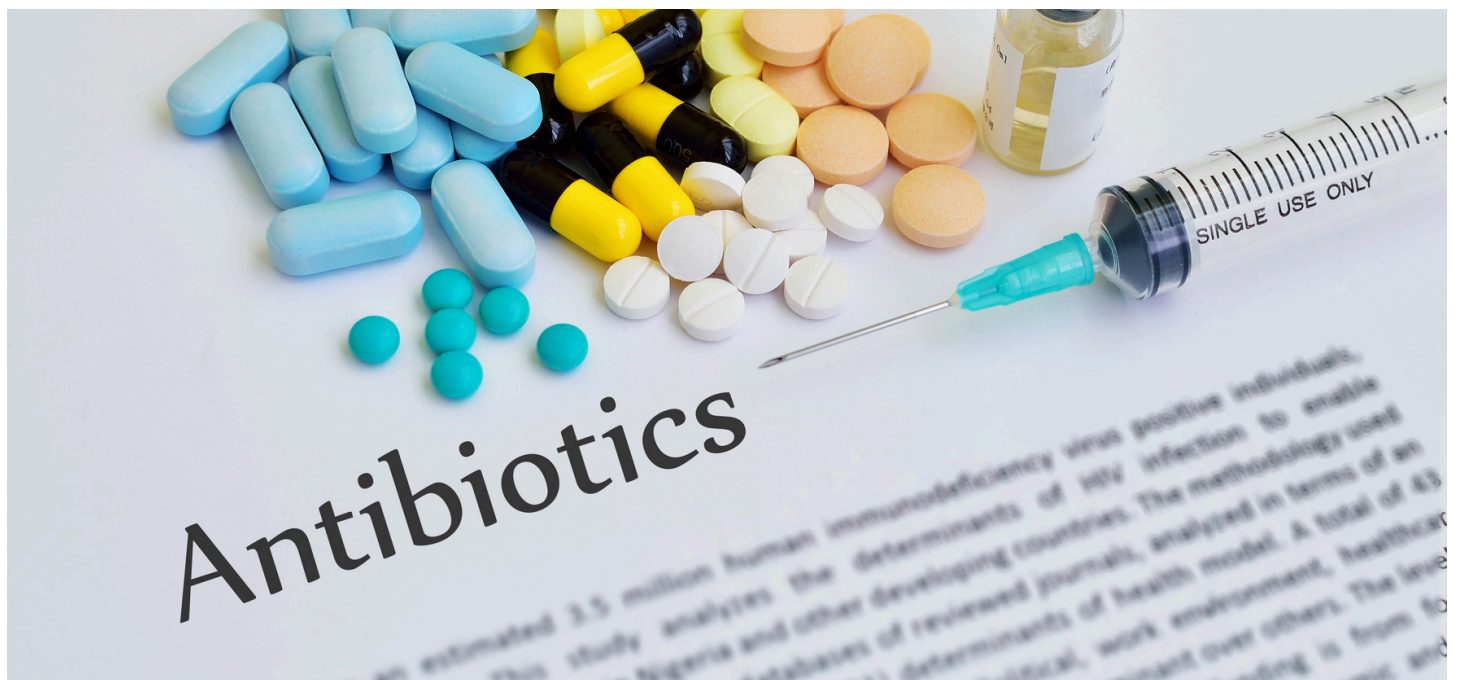
Those antibiotic residues are still active when humans consume milk. **They travel into the digestive system and begin killing bacteria in the gut.** While they wipe out susceptible bacteria, they allow antibiotic-resistant bacteria to survive and grow.



How to bring it up: “When we drink milk with antibiotic residues, it doesn’t just affect cows — it changes our gut bacteria, killing off the weak ones and leaving the resistant ones behind.”

3. The Risk of **Antibiotic Resistance.**

This selection process creates **a population of antibiotic-resistant bacteria in the human gut.** Normally, they might just cause digestive upset, but if someone's immune system weakens and these bacteria enter the bloodstream or urinary tract, doctors may find **that standard antibiotics no longer work.**



How to bring it up: "If those resistant bacteria spread into the body, infections can become much harder to treat. It's one of the hidden dangers of dairy we don't usually think about."

What is A2 Milk? And Is It Really Healthier?

The Claim

Some brands of dairy promote "A2 milk" as easier to digest than regular milk. This is based on the type of casein protein in the milk:

- **A1 casein** – Found in most milk today (from large Holstein cows). When digested, it can produce a byproduct linked to bloating, cramps, and diarrhea in sensitive individuals.
- **A2 casein** – Found in older breeds like Guernsey cows. It doesn't produce this byproduct, so some people report fewer digestive symptoms.

The Reality

- All milk contains casein, a chain of amino acids.
- Milk from black-and-white Holstein cows produces **A1 casein**. At position 67, there's a histidine instead of a proline.
- When digested, this creates a byproduct that can cause cramps, bloating, and diarrhea in some people—similar to lactose intolerance.
- Milk from smaller brown Guernsey cows produces **A2 casein**, which does not create that byproduct.
- Only about **10–20% of people** are sensitive to A1 casein. For them, A2 milk may cause fewer digestive issues.

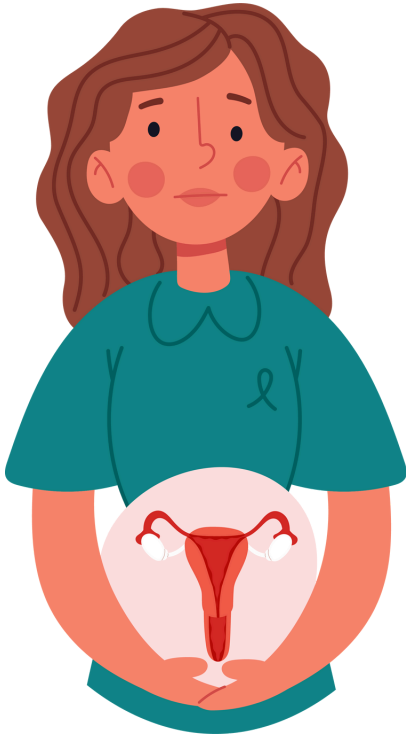
But here's the bigger picture:

- No one needs to consume cow's milk—it's baby calf growth fluid.
- Today's dairy cows are genetically modified to lactate even while pregnant. This means their milk is **full of estrogens and growth promoters**. These hormones:
 - Suppress testosterone in boys.
 - Raise estradiol levels in women.
 - Promote the growth of breast lumps and uterine fibroids.
 - Fuel breast cancer
 - Contribute to prostate problems and increase prostate cancer risk in men.

Bottom Line:

Even if A2 milk causes fewer digestive symptoms, it still carries the hormone load of modern dairy and poses serious health risks. It was made for calves, not humans.

Hidden Hormones in Modern Dairy.



Dr. Klaper also pointed out how today's industrial dairy is very different from the small family farms of the past. Modern cows are bred and genetically modified to **keep producing milk even while pregnant**. That means the milk people drink is **loaded with estrogens and growth promoters**.

Health effects include:

- **In women:** higher estrogen levels, stimulation of breast lumps, heavier bleeding with fibroids, and increased risk of breast cancer.
- **In men and boys:** suppressed testosterone, unstable prostate growth, and a higher lifelong risk of prostate cancer.



How to bring it up: "Dairy today isn't just milk — it's milk from pregnant cows, which means it's full of hormones that can fuel breast and prostate cancers."

Dairy isn't just about animal suffering — it also has real impacts on our own health. By choosing plant-based alternatives, people can avoid hidden risks like antibiotic residues, protect their gut health, and reduce the threat of antibiotic resistance.



The Vegan Community: [Website](#) | [Instagram](#) | [Facebook](#) | [Email](#)